

# Parkheath

*Sold on Service*

---

**Lancaster Drive NW3**

**£3,600 PCM (£831 per week) - Camden Band F**



Extremely spacious 2 double bedroom apartment

Private balcony and communal garden

Main bedroom with fitted wardrobes

3 piece bathroom

Close to Belsize Park and Swiss Cottage tubes

1s floor in grand period house

Large reception with feature fireplace

Second double bedroom

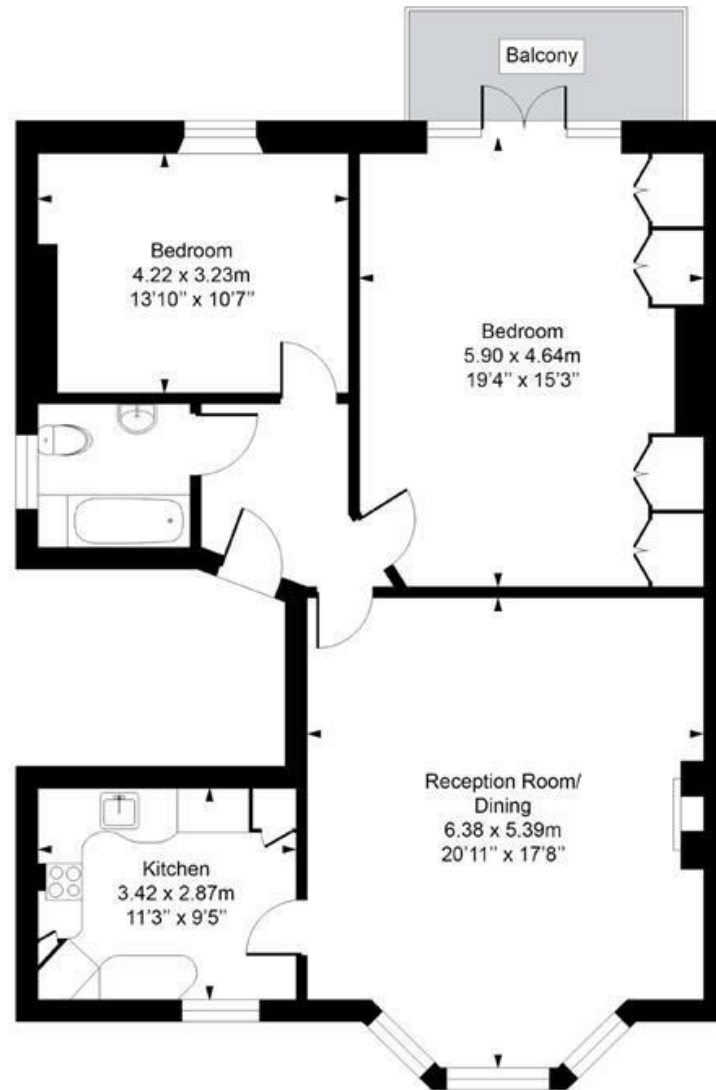
Sought after tranquil location

EPC: Rating D, Council Tax: Camden band F

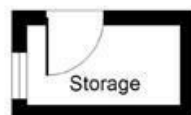
Belsize Park Office 020 7431 3104

## Lancaster Drive

Approximate Gross Internal Area = 95.2 Sq m / 1025 sq ft  
Landing = 2.3 Sq m / 25 sq ft  
Total = 97.5 Sq m / 1050 sq ft



**First Floor**



**Landing**

Measured in accordance with RICS guidelines. Every attempt is made to ensure accuracy  
However all measurements are approximate.  
The floor plan is illustrative purposes only and is not to scale  
ELLIE CLAIRE PHOTOGRAPHY LTD  
[www.ellieclairephotography.com](http://www.ellieclairephotography.com)

The particulars do not constitute part of an offer or contract. The particulars, including text, photographs and plans, are for the guidance only of prospective purchasers/tenants and must not be relied upon as statements of fact. The descriptions provided therein represent the opinion of the author and whilst given in good faith should not be construed as statements of fact. Nothing in these particulars shall be deemed a statement that the property is in good condition or otherwise or that any services or facilities are in good working order. All measurements are approximate